

Technical Specifications

ANALYTICAL MODES

Manual, Predilute, Capillary

TOTAL PARAMETERS 36

WBC, RBC, HGB, HCT, MCV, MCH, MCHC, RDW-CV, RDW-SD, PLT, MPV, PDWCV, PDW-SD, PCT, P-LCR, P-LCC, Neu%, Lym%, Mon%, Eos%, Bas%, Neu#, Lym#, Mon#, Eos#, Bas#, ALY%*, LIC%*, ALY#*, LIC#*, cWBC#*, NRBC%*, NRBC#*, NLR*, Mentzer Index, RDWI

PRINCIPLE OF MEASUREMENT RBC / PLT / WBC / DIFF

Electrical Impedance, DIFF: 3 Angle Laser Flow Cytometry, HGB: Cyanide Free Colorimetry, MCV: Measured, HCT: Calculated

GRAPHICS

3 Histograms (WBC/RBC/PLT), 4 Scatterplots (DIFF x3, BASO)

SAMPLE VOLUME

Whole Blood: 15 µL, CBC Only: 11 µL, Pre-diluted: 20 µL, Capillary: 20 µL

LINEARITY RANGE

WBC (x 10^3/L): 0 – 300, RBC (x 10^6/L): 0.00 - 8.50, Hb (g/dL): 0 - 25.0, HCT (%): 0 – 67, PLT (x 10^3/L): 0 – 3000

CALIBRATOR

ELite H Cal (3mL), Open Vial Stability at 2-8°C: 7 Days

TRI-LEVEL CONTROLS

Erba H5 CON L, N, H (3mL), Open Vial Stability at 2-8°C: 14 Days

THROUGHPUT

60 Tests / Hour

QUALITY CONTROL

500 files with L-J graph X-Bar Analysis

DATA STORAGE

1,00,000 Results with Graphs

DIMENSION (MM)

364 x 498 x 431

WEIGHT (KG)

26.5

REAGENTS

Erba Dil (20L), Erba Lyse 1 (200mL), Erba Lyse 2 (500mL), Elite H Clean (50mL)

INTERFACES

4 USB + 1 LAN Port

OPERATING ENVIRONMENT

15-30°C Atmospheric pressure: 70kPa~106kPa

POWER REQUIREMENT

A.C.100-240V;-50/60Hz; ≤200VA

* Research use only

H560 ORDER DETAILS

PRODUCT CODE	PRODUCT NAME	DESCRIPTION
166121	H560	5 Part Differential Analyzer

H-SERIES REAGENTS

PRODUCT CODE	PRODUCT NAME	PACK SIZE (ML)
121743	Erba H560 Diluent	20000
121744	Erba H560 Lyse1	4X 200
121745	Erba H560 Lyse2	3 X 500
121939	ELite H Clean	4 X 50
166343	ELite H5 CON Low	3
166344	ELite H5 CON Normal	3
166345	ELite H5 CON High	3
166092	ELite H CAL	3

Erba Lachema s.r.o.

Karásek 2219/1d, 621 00 Brno, Czech Republic
Phone: +420 517 077 111

✉ sales@erbamannheim.com

www.erbamannheim.com

Transasia Bio-Medicals Ltd.

An ISO 13485:2016 / 9001:2015 Certified Company

Transasia House, 8, Chandivali Studio Road,
Chandivali, Andheri (E), Mumbai - 400 072

T: (022) 4030 9000 F: (022) 2857 3030

✉ responses@transasia.co.in



H560
5 Part Diff Hematology Analyzer



Ensures high accuracy with Tri-angle Laser Flowcytometry



36 Parameters Enhanced patient care

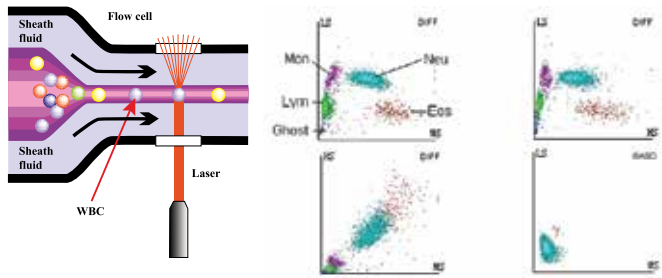


Supports geriatric and pediatric samples



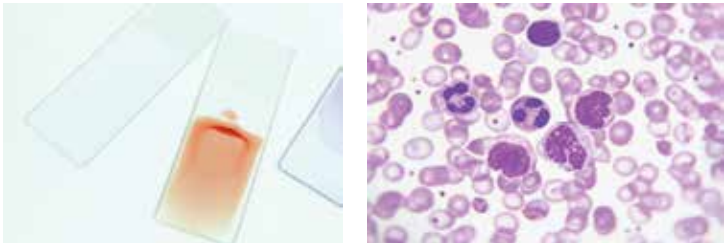
Upgrade to a five part differential and report faster with more confidence.

Three part differential systems are not designed to report results on abnormal patients without the need for further testing. These investigations are complex and delay the release of critical results to the requesting clinician. The H560's five part differential count allow users to report world class result faster and with more confidence.



Manual blood film review should focus on morphology not counting

Blood film review is a complex process and takes time to master. Adding a five part differential system to the laboratory means that valuable time at the microscope can be spent assessing morphology and other abnormalities rather than counting.

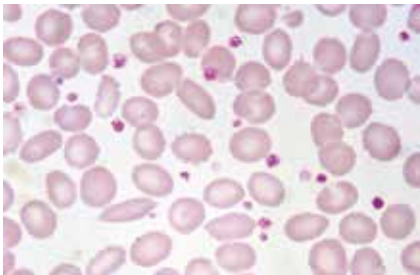


With the H560 users can go beyond the normal 5 part differential with added information from the advanced research parameters - ALY%, LIC%, ALY#, LIC#, cWBC#, NRBC%, NRBC#.

H560 is ahead of the rest with class leading design and technologies.

Anti-clog technology

The impedance aperture is treated with a high energy pulse after each sample – reducing the risk of blockages



Detailed platelet information

The H560's PLCR and PLCC parameters allow users to report detailed information about the patient's platelet status

An Inflammation & Prognosis Marker in Hematological Disorders

NLR: Novel prognostic marker for predicting short and long-term mortality in patients with COVID-19, cancer, sepsis, CVD, and post-operative complications. An NLR >3 is indicative of disease severity



H560 is ahead of the rest with class leading design and technologies.

Reduce pre-analytical variables with ADDM

To ensure consistent and exact dilution of the patient sample, an automated diluent dispense mode (ADDM) has been created to help reduce errors



NRBC, CWBC, Mentzer Index & RDWI : Indices for Differential Diagnosis

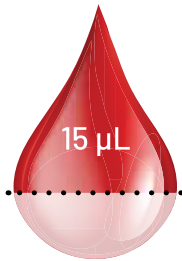


- **NRBC** - To rule out Leukemia, anemia or spleen disorder
- **CWBC** - To obtain accurate WBC count for better clinical treatment.
- **Mentzer index and RDWI** Screening indices for IDA & β -Thal

When less is better, Much better H560 uses less than a drop of blood

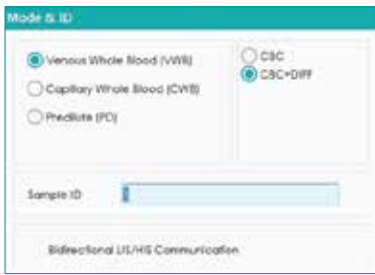
Just 15µL of Aspiration volume

The efficeint fludics design allows the H560 to aspirate only 15 µL. This combined with the open tube sampling aspiration means a couple of drops is more than enough.



Multiple analytical modes

Six analytical processing modes mean flexibility of analysis and ensure you get the best result for your patient first time.



Microscopic Exam. Settings		
No.	Parameter Name	Code System
1	Neutrophilic segmented granulocyte	
2	Neutrophilic band granulocyte	
3	Lymphocyte	
4	Monocyte	
5	Eosinophil	
6	Basophil	
7	Plasmacyte	
8	Atypical Lymph	
9	Blast	

Provision to include microscopic investigations such as bands segment, blast, etc. in the printed report

- Consolidated patient reports can be generated for customized parameters such as blood type, Rh blood group, ESR, reticulocyte, CRP along with other reportable parameters